

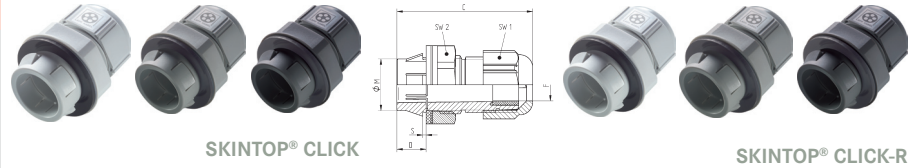
New

SKINTOP® CLICK / SKINTOP® CLICK-R



Info

- The most innovative cable insertion system on the market for very fast, highly flexible assembly. Simply click in - turn to left - turn to right - finished. Result: fixed, centred, strain relieved and maximum protection class in seconds.



Benefits

SKINTOP® CLICK

- Fewer parts, counter nut no longer needed
- Up to 70% time saving due to innovative CLICK system
- Simple, free assembly in any position
- Vibration protection
- No thread required

SKINTOP® CLICK-R

- Benefits see SKINTOP® CLICK

Application range

SKINTOP® CLICK

- Automation technology
- Solar applications
- Switch cabinet building
- Measurement, control and electrical applications
- Air conditioning technology

SKINTOP® CLICK-R

- With reducing seal insert, to seal cables with smaller outer diameters.

Approvals (Norm references)



Scope of delivery

- Disassembly tool contained in the delivery scope

Technical data

- RAL** Colour delivered
RAL 7001 silver-grey
RAL 7035 light grey
RAL 9005 black / UV resistant
- Material**
Body: special polyamide
Seal: special elastomer
- IP** Degree of protection
SKINTOP® CLICK
IP 68 - 4 bar (M12)
IP 68 - 5 bar (M16 - M32)
- Range of temperature**
-20°C up to +100°C

Part number	Part designation / size	Clamping range ØF mm	M (hole mm)	SW1 / SW2 mm	Overall length C mm	Thread length D mm	S (wall thickness mm)	Pieces / PU
SKINTOP® CLICK light grey								
53112692	CLICK 12	3,5 - 7	12,3 (-0,2)	15 / 18	40,0	8,0	1,0 - 4,0	50
53112686	CLICK 16	5 - 9	16,3 (-0,2)	19 / 22	42,0	8,0	1,0 - 4,0	50
53112687	CLICK 20	7 - 13	20,3 (+0,2)	25 / 27	45,5	8,0	1,0 - 4,0	25
53112688	CLICK 25	9 - 17	25,3 (-0,2)	30 / 34	48,5	8,0	1,0 - 4,0	25
53112694	CLICK 32	11 - 21	32,3 (-0,2)	36 / 40	55,0	8,0	1,0 - 4,0	25
SKINTOP® CLICK silver grey								
53112921	CLICK 12	3,5 - 7	12,3 (-0,2)	15 / 18	40,0	8,0	1,0 - 4,0	50
53112876	CLICK 16	5 - 9	16,3 (-0,2)	19 / 22	42,0	8,0	1,0 - 4,0	50
53112877	CLICK 20	7 - 13	20,3 (-0,2)	25 / 27	45,5	8,0	1,0 - 4,0	25
53112878	CLICK 25	9 - 17	25,3 (-0,2)	30 / 34	48,5	8,0	1,0 - 4,0	25
53112922	CLICK 32	11 - 21	32,3 (-0,2)	36 / 40	55,0	8,0	1,0 - 4,0	25
SKINTOP® CLICK black								
53112923	CLICK 12	3,5 - 7	12,3 (-0,2)	15 / 18	40,0	8,0	1,0 - 4,0	50
53112882	CLICK 16	5 - 9	16,3 (-0,2)	19 / 22	42,0	8,0	1,0 - 4,0	50
53112883	CLICK 20	7 - 13	20,3 (-0,2)	25 / 27	45,5	8,0	1,0 - 4,0	25
53112884	CLICK 25	9 - 17	25,3 (+0,2)	30 / 34	48,5	8,0	1,0 - 4,0	25
53112924	CLICK 32	11 - 21	32,3 (-0,2)	36 / 40	55,0	8,0	1,0 - 4,0	25
SKINTOP® CLICK-R light grey								
53112925	CLICK-R 12	1 - 5	12,3 (-0,2)	15 / 18	40,0	8,0	1,0 - 4,0	50
53112689	CLICK-R 16	4 - 7	16,3 (-0,2)	19 / 22	42,0	8,0	1,0 - 4,0	50
53112690	CLICK-R 20	5 - 10	20,3 (-0,2)	25 / 27	45,5	8,0	1,0 - 4,0	25
53112691	CLICK-R 25	6 - 13	25,3 (-0,2)	30 / 34	48,5	8,0	1,0 - 4,0	25
53112926	CLICK-R 32	7 - 15	32,3 (-0,2)	36 / 40	55,0	8,0	1,0 - 4,0	25
SKINTOP® CLICK-R silver grey								
53112927	CLICK-R 12	1 - 5	12,3 (-0,2)	15 / 18	40,0	8,0	1,0 - 4,0	50
53112879	CLICK-R 16	4 - 7	16,3 (-0,2)	19 / 22	42,0	8,0	1,0 - 4,0	50
53112880	CLICK-R 20	5 - 10	20,3 (-0,2)	25 / 27	45,5	8,0	1,0 - 4,0	25
53112881	CLICK-R 25	6 - 13	25,3 (-0,2)	30 / 34	48,5	8,0	1,0 - 4,0	25
53112928	CLICK-R 32	7 - 15	32,3 (-0,2)	36 / 40	55,0	8,0	1,0 - 4,0	25
SKINTOP® CLICK-R black								
53112929	CLICK-R 12	1 - 5	12,3 (-0,2)	15 / 18	40,0	8,0	1,0 - 4,0	50
53112885	CLICK-R 16	4 - 7	16,3 (-0,2)	19 / 22	42,0	8,0	1,0 - 4,0	50
53112886	CLICK-R 20	5 - 10	20,3 (-0,2)	25 / 27	45,5	8,0	1,0 - 4,0	25
53112887	CLICK-R 25	6 - 13	25,3 (-0,2)	30 / 34	48,5	8,0	1,0 - 4,0	25
53112931	CLICK-R 32	7 - 15	32,3 (-0,2)	36 / 40	55,0	8,0	1,0 - 4,0	25

Accessories

SKINTOP® CLICK

- SKINTOP® DIX-M see page 662
- SKINTOP® DIX-M AUTOMATION see page 663
- SKINTOP® SDV-M ATEX see page 664
- SKINTOP® SD-M see page 665
- SKINTOP® DV-M see page 665

SKINTOP® CLICK-R

- SKINTOP® SDVR-M ATEX see page 664