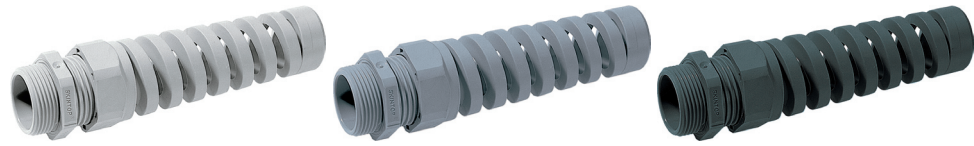
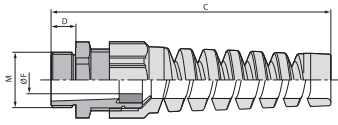


**SKINTOP® BS-M**



SKINTOP® BS-M

**Benefits**

- Reliable bending and antikink protection
- Conservation
- Functional reliability
- To protect flexible cables

**Application range**

- Cables for electrical appliances and machinery, which are moved under normal use, must be protected against excessive bending, as required in accordance with VDE 0730.
- Hand-held equipment
- Robotics industry
- Light and sound applications
- Flexing machine parts

**Approvals (Norm references)**



**Design**

- Metric connection thread acc. to EN 50262

**Note**

- For suitable accessories see SKINTOP® metric accessories
- Counter nut to be used SKINTOP® GMP-GL-M
- Version with reducing insert to seal smaller cable cross-sections SKINTOP® BSR-M on request
- Versions SKINTOP® BS M ISO with extra long connection thread, see table, have no DNV approval

**Technical data**

**Caution**  
 Installation dimensions and tightening torques see Appendix T21

**On request**  
 With reducing sealing ring

**Colour delivered**  
 RAL 7001 silver-grey  
 RAL 7035 light grey  
 RAL 9005 black / UV resistant

**Material**  
 Body: Polyamide  
 Seal: CR

**Degree of protection**  
 IP 68 - 5 bar  
 IP 69 K pending

**Range of temperature**  
 -20°C up to +100°C

Part number	Part designation / size	Clamping range ØF mm	SW mm	Overall length C mm	Thread length D mm	Pieces / PU
<b>SKINTOP® BS-M silver grey</b>						
53111600	BS-M 12x1,5	3,5-7	15	64.0	8.0	100
53111610	BS-M 16x1,5	4,5-10	19	86.0	8.0	100
53111620	BS-M 20x1,5	7-13	25	101.0	8.0	50
53111630	BS-M 25x1,5	9-17	30	125.0	9.0	25
53111640	BS-M 32x1,5	11-21	36	149.0	10.0	25
<b>SKINTOP® BS-M black</b>						
53111700	BS-M 12x1,5	3,5-7	15	64.0	8.0	100
53111710	BS-M 16x1,5	4,5-10	19	86.0	8.0	100
53111720	BS-M 20x1,5	7-13	25	101.0	8.0	50
53111730	BS-M 25x1,5	9-17	30	125.0	9.0	25
53111740	BS-M 32x1,5	11-21	36	149.0	10.0	25
<b>SKINTOP® BS-M light grey</b>						
53111800	BS-M 12x1,5	3,5-7	15	64.0	8.0	100
53111810	BS-M 16x1,5	4,5-10	19	86.0	8.0	100
53111820	BS-M 20x1,5	7-13	25	101.0	8.0	50
53111830	BS-M 25x1,5	9-17	30	125.0	9.0	25
53111840	BS-M 32x1,5	11-21	36	149.0	10.0	25
<b>SKINTOP® BS M ISO silver-grey (with long metric connecting thread)</b>						
53017610	BS M 16 x 1,5 PG 9	3,5-8	19	77.5	12.0	100
53017630	BS M 20 x 1,5 PG 13,5	5-12	24	102.0	13.0	50
53017640	BS M 25 x 1,5 PG 16	9-14	27	114.5	13.0	50
<b>SKINTOP® BS M ISO black (with long metric connecting thread)</b>						
53017810	BS M 16 x 1,5 PG 9	3,5-8	19	77.5	12.0	100
53017830	BS M 20 x 1,5 PG 13,5	5-12	24	102.0	13.0	50
53017840	BS M 25 x 1,5 PG 16	9-14	27	114.5	13.0	50