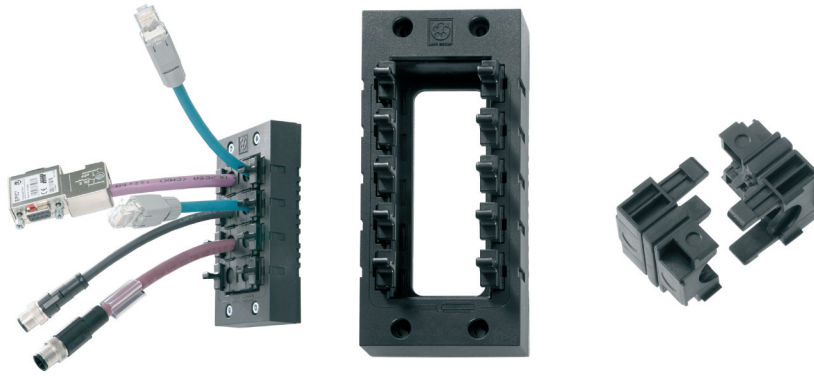


**New**

# SKINTOP® CUBE



SKINTOP® CUBE

SKINTOP® CUBE FRAME

SKINTOP® CUBE MODULE

**Benefits**

- Various clamping range
- Vibration safe fixed modules
- Strain relief
- Oil resistance
- Simplified service due to easy assembling and disassembling

**Application range**

- For installation of harnessed cables
- Everywhere where cables must be safely inserted into housings.
- Apparatus and switch cabinet construction
- Electronic installations
- Automation technology

**Approvals (Norm references)**



**Design**

- SKINTOP® CUBE consists of SKINTOP® CUBE FRAME and the flexible clip module SKINTOP® CUBE MODULE.
- For cut-outs for industrial connectors with standard defined bore holes.
- For cut-outs for 16-pole industrial connectors (36 x 86mm)
- For cut-outs for 24-pole industrial connectors (36 x 112mm)

**Scope of delivery**

- SKINTOP® CUBE FRAME including mounting material

**Suitable tools**

- Kraftform Kompakt® 10



**Info**

- Innovative multi cable bushing system with variable clamping ranges for high assembling flexibility.
- In case of disassembling frame can remain on housing and clip module on the cable.

**Technical data**



**Approvals**  
UL pending



**Material**  
Frame: Glas fibre reinforced polyamide  
Frame seal: CR  
Clip Module: Special polypropylene  
Clip Module Seal: LSE 2



**Degree of protection**  
IP 64



**Range of temperature**  
-20 °C up to +80 °C

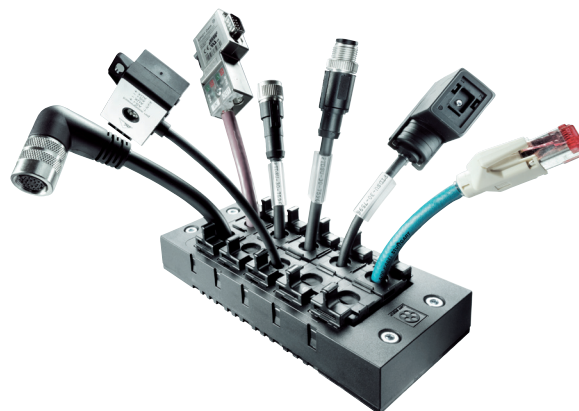
Part number	Part designation / size	Clamping range ØF mm	Max. Number of executions	Pieces / PU
<b>SKINTOP® CUBE Frame</b>				
52220000	SKINTOP® CUBE FRAME 16		8	1
52220001	SKINTOP® CUBE FRAME 24		10	1
<b>SKINTOP® CUBE Clip Module</b>				
52220002	SKINTOP® CUBE MODULE 20x20 SMALL	4 - 6		5
52220003	SKINTOP® CUBE MODULE 20x20 LARGE	6 - 9		5
52220004	SKINTOP® CUBE MODULE 20x20 BLIND			5
52220005	SKINTOP® CUBE MODULE 40x40 SMALL	9 - 12		5
52220006	SKINTOP® CUBE MODULE 40x40 LARGE	12 - 16		5
52220007	SKINTOP® CUBE MODULE 40x40 BLIND			5

**Comparable products**

- Cable Bushing System CABLEFIX

**Accessories**

- FLEXIMARK® LB-10 W



SKINTOP® CUBE